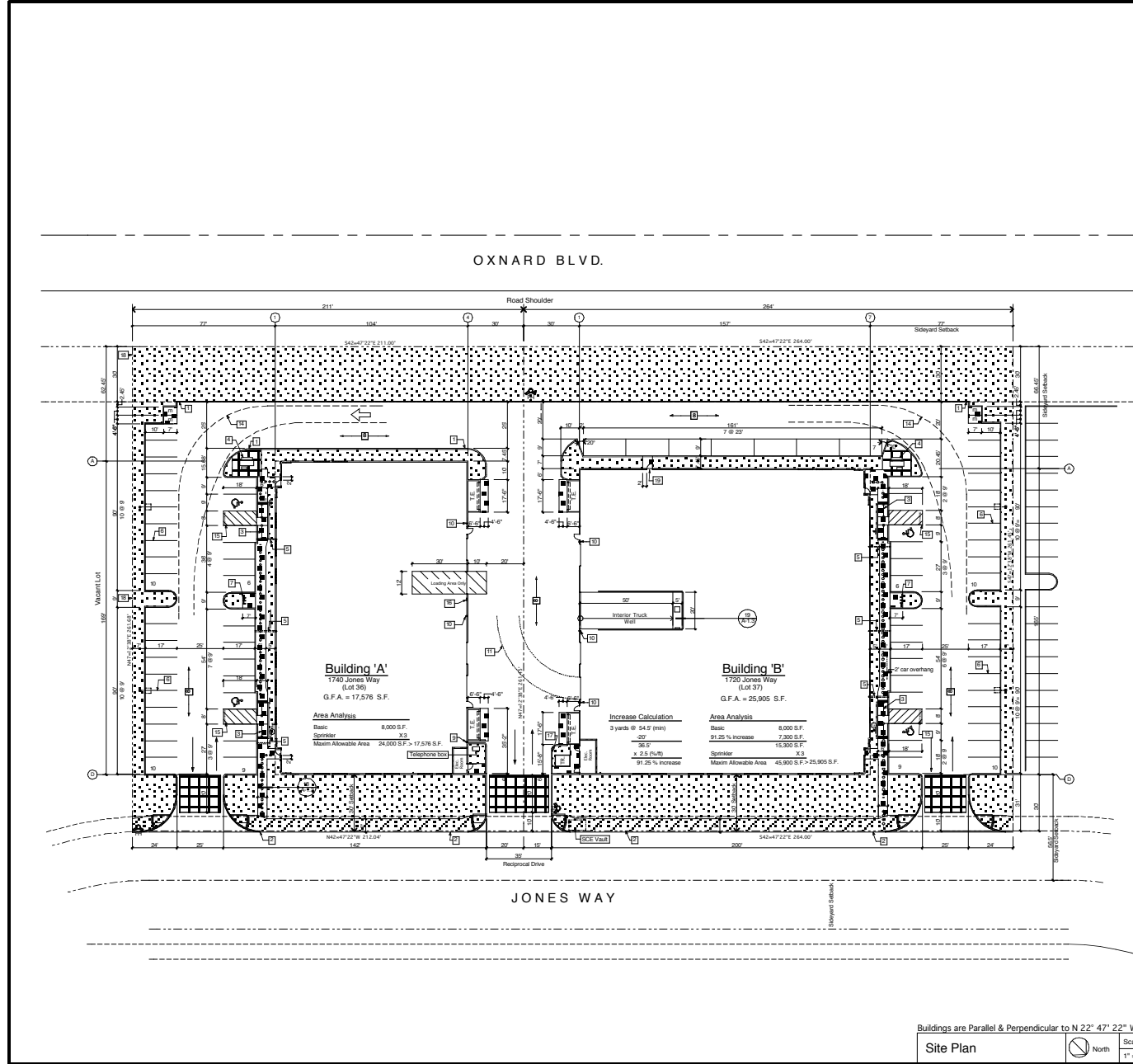


LandShaw Architecture, Inc. 111747 W. Pico Blvd., Los Angeles, CA 90064
 License No. 310-475-4775
 11/17/17
 11/17/17



Site Legend

- Property Line
- Path of travel
- H.C. Symbol per det.
- H.C. Sign - see Site Note # 12
- T.E. Covered trash enclosure per det.
- Transformer Location- See elec.
- Motorcycle stall- pour 4" concrete w/ 4 bars @ 24" o.c. as a base
- Fire Hydrant per civil
- Shub gas service to this point
- Light stand per elec.
- Planter Area
- 4" concrete slab walkway with 6"x6" #10 wire mesh over 2" sand over compacted soil per soils report, unless noted otherwise, for control expansion joints see details
- Concrete sidewalk per civil drawings
- 7" P.C.C. decorative colored concrete with 2"x2" scored pattern, #4 rebar @ 24" o.c. on 4 inches of base material. Color to be Sunset Rose.

Site Keyed Notes

- Paint curb red
- Concrete curb see civil drawings
- Handicapped curb ramp, see det.
- Lunch seating area per det.
- Roof drain/curb planter thru curb face- see det.
- Painted parking striping see det.
- Bike rack per det.
- A.C. Paving
- Roof drain daylite thru wall @ 6" AFF; split to trough- see det.
- Roof Drain - daylite thru wall @ 12" AFF
- 33' straight body truck turning radius
- 48' fire truck turning radius
- 55' semi truck turning radius
- Trash truck turning radius
- The words "NO PARKING" shall be painted on the ground within each 3' loading and unloading aisle. This letters shall be painted in white letters size 12" high and located so that it is visible to traffic enforcement officials - see detail
- Provide a sign stating "The striped area is for LOADING ONLY and no storage or other activities may occur within the striped area"
- Pipe guard per det.
- Install redwoodheader along west property line
- Fire Department Access Door (NOT AN EXIT)

Site Notes

- The contractor shall verify all dimensions and site conditions prior to starting work and shall notify the architect of any discrepancies or inconsistencies.
- All painted lines indicated on the site plan are to be 4" wide white traffic paint unless noted otherwise.
- Provide expansion joints at all concrete curbs and planters.
- See electrical drawings for all site electric and telephone work.
- See civil drawings for all grading, paving, curbs, off-site work, utilities and site details not indicated on this sheet.
- See landscape drawings for all landscaping and irrigation work.
- Locate all light standards a minimum of 3'-6" from all parking stalls.
- The contractor shall telephone underground service alert (USA) toll free at 1-800-451-4131 48 hours prior to the start of construction.
- Concrete walkways shall have a medium broom in the direction perpendicular to the direction of the walk.
- See civil drawings for all curb radii.
- Provide a sign, in a conspicuous place, at each entrance to off-street parking, not less than 17" inches by 22 inches in size with lettering not less than one inch in height, which clearly and conspicuously states the following: "Unauthorized vehicles parked on designated accessible not displaying distinguishing placards or license plates issued to persons with disabilities may be towed away at owner's expense." Towed vehicles may be reclaimed by _____ or by telephoning _____ The contractor shall verify the address and telephone number with the city prior to fabrication. Install gully, pipe and provide concrete footings as required, @ = 36" above fin. ground.
- Each parking space reserved for the handicapped shall be identified by a permanently affixed reflectorized sign constructed of plastic on steel, beaded text, or equal, displaying the international symbol of Accessibility. The sign shall not be smaller than 70 square inches (0.642 m²) in area and shall be centered on the pole at the interior end of the parking space at a minimum height of 6'0" (0.4 m) from the parking space finished grade, ground, or sidewalk. Install "van accessible staff" sign @ van space. Mount @ 4'-0" where shown on plans.

Scale: 1" = 20'-0"

North

Site Plan

Project: **Onward Maritime, Ltd.**
 596 Constitution Ave. Ste H
 Camarillo, CA 93012

Sheet: **Site Plan**

Date: **7-24-03**

Scale: **As Noted**

Project No.: **0224**

Sheet No.: **A-1.1**

Planning Department: 7-13-01
 Planning Department: 9-19-01
 Consultant Package: 3-12-03
 Planning Department: 3-18-03
 Planning Department: 4-29-03
 Building Department: 5-29-03
 Building Department: 7-24-03

LANET / SHAW
 ARCHITECTS INC.
 11747 W. PICO BLVD.
 LOS ANGELES, CA 90064
 Phone 310 475-4775

Onward Maritime, Ltd.
 596 Constitution Ave. Ste H
 Camarillo, CA 93012
 Onward Maritime, Ltd.
 Martin Teitelbaum

Planning #: **PZ 01-5-74**
 B.S.P. #: **PC 03-3820/03-3819**