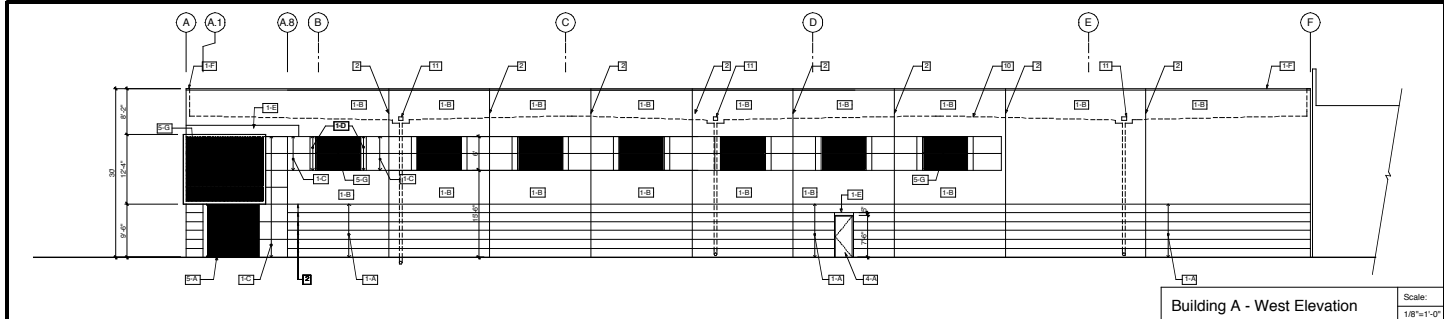
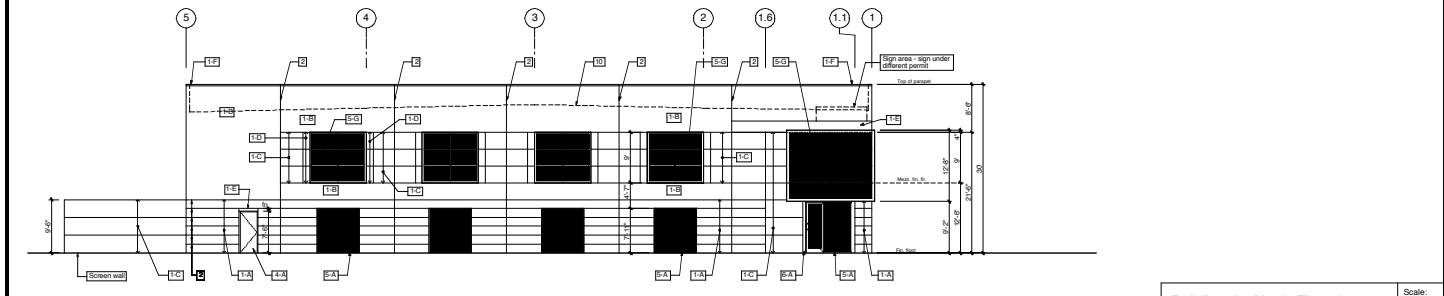


Lead/Draw Architect: Inc./Architect Project: 03-200-6 - The RoadSigns/Current/3200 Road, Suite 101/216
 Tuesday, October 19, 2005



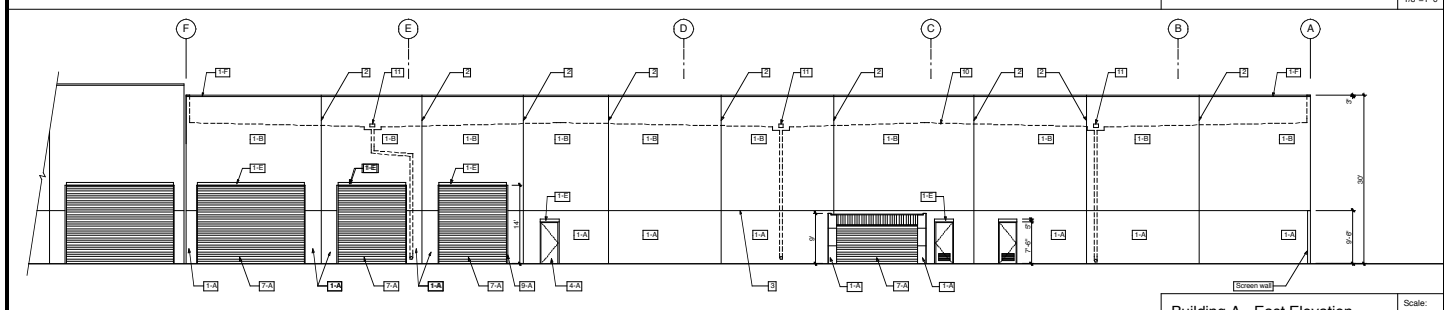
Building A - West Elevation

Scale: 1/8"=1'-0"



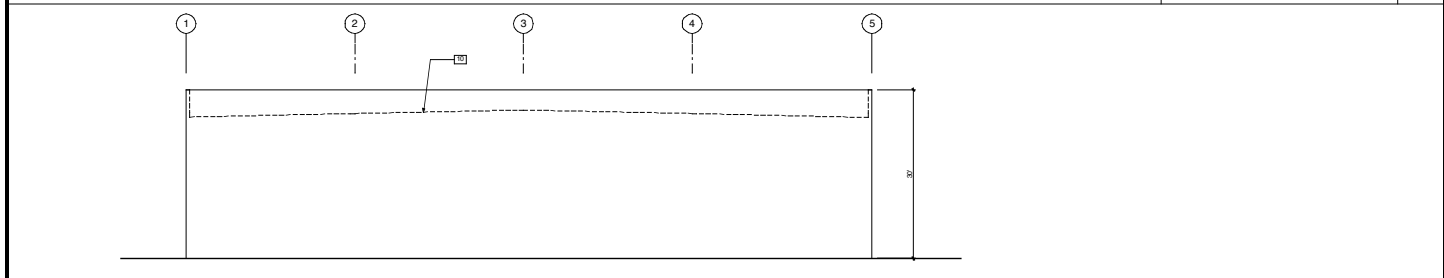
Building A - North Elevation

Scale: 1/8"=1'-0"



Building A - East Elevation

Scale: 1/8"=1'-0"



Building A - South Elevation

Scale: 1/8"=1'-0"

Exterior Material Key List	
1.	Painted concrete 88-up panel
2.	Typical panel joint
3.	Typical reveal
4.	Metal rain door
5.	Aluminum and glass storefront
6.	Aluminum brake metal
7.	Metal overhead roll-up door
8.	12" High Helvetica medium address numbers, recessed
9.	Steel channel embedded in concrete
10.	Line of roof beyond parapet
11.	Overhead scupper
12a.	Floor Drain, daylight thru panel @ 12" AFF.
12b.	Floor drain under curb face or daylight to trough per site plan
13.	Exterior Lite fixture
14.	Decorative recess @ conc. panel - 1" deep

Material Legend	
	Triton Consul 14" Clear Grey tinted glass in aluminum mullion -Wymar finish Color Benjamin Moore # 1469 T = Tempered
	Triton Consul 14" Evergreen tinted glass in clear anodized aluminum mullion T = Tempered
	Triton Consul 14" Evergreen Reflectivetrained glass in clear anodized aluminum mullion T = Tempered
	Painted concrete panel- see elevation for color Note: Fabricator shall place samples on wall for approval by owner prior to painting job.
	Overhead roll-up door- see elevation for color
	Exterior lite fix. - mount @ 22'-6"

Color Key List	
A.	Dark grey 1469
B.	Medium grey 1467
C.	Light grey 1464
D.	Green/Grey 473
E.	Blue/Grey 839
F.	Crimson Red 1301
G.	Mullion Natural Aluminum

NOTE - All colors are Benjamin Moore Classic

Material Number: Color Letter:

Planning Department Submittal	7-3-03
Planning Department Corrections	9-6-03
Consultant Package	10-10-03

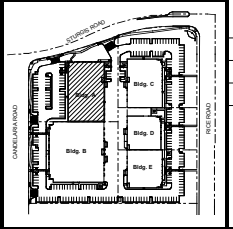
LANET / SHAW
 ARCHITECTS INC.
 11741 W. Pico Blvd.
 Los Angeles - CA 90064
 Phone 310 475-4775

Pacific Landmark, Ltd.
 596 Constitution Ave. Ste H
 Cananda, CA 95012
 Development Consultant:
Martin Teitelbaum

Project #	PZ 03-200-6 & 03-300-12
B & S #:	
Stamp	

Project	Pacific Landmark, Ltd. Parcels 1 & 6 of Normand Business Park Parcels 1 & 6 of Normand Business Park Oxnard, CA 93050
Sheet:	Building A Exterior Elevations

Date:	10-10-03
Scale:	As Noted
Project No.:	0309
Sheet No.:	



A-3.1